

# **NOVA INSET GRANITE SINKS**

## **Installation Instructions & Aftercare Information**



08-000018-02

Due to our policy of continual improvement, we reserve the right to change specifications without prior notice.

# Installation

## Installer

Please leave this leaflet with the user, as it contains valuable after care advice.

## Notes

- ⚠ During installation, take care to protect the sink from scuffs and scratches.
- ⚠ Do not stand on the sink.
- ⚠ During installation, do not stand the sink on its edges or corners. This may cause damage.
- ⚠ Avoid straining and over tightening of all plumbing fixtures connected to the sink.
- ⚠ Carefully check that the moulding and edges of the sink are dead level so that water will flow off the drainer (if applicable to sink).
- ⚠ The clamping brackets are suitable for worktops of between 10–45 mm thickness. According to the thickness of your worktop, please follow suggested clamping bracket configurations (A, B or C) (Fig. 1.1).
- ⚠ You will only need to use the spacer when fitting worktops <25mm (D) (Fig. 1.1).

## Preparing the Worktop

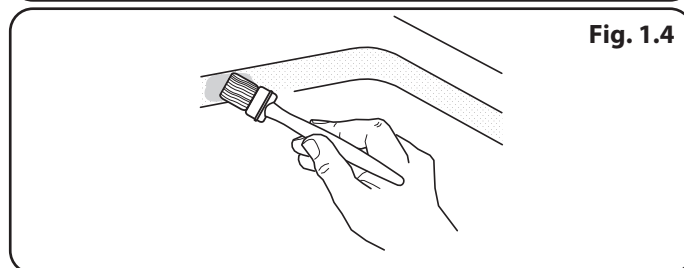
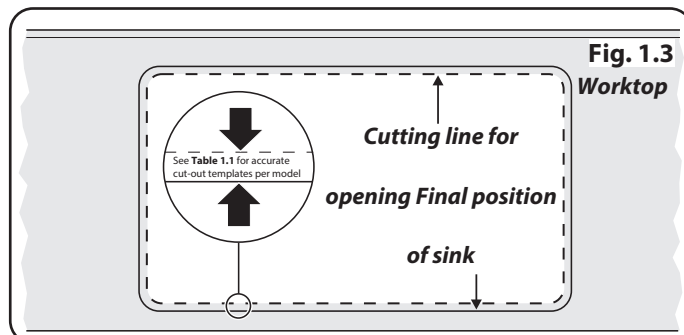
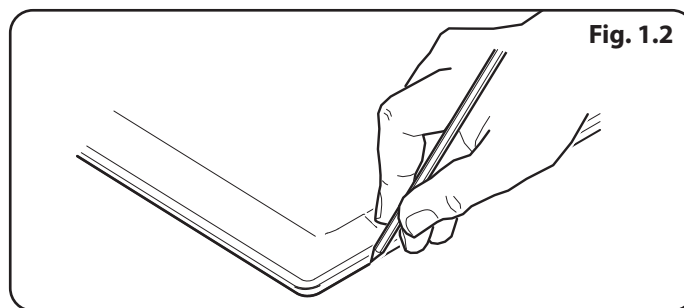
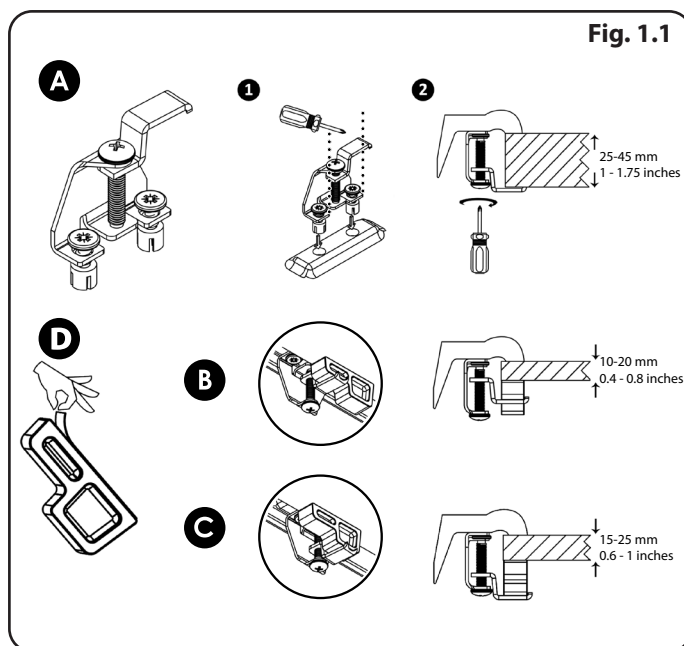
### Marking Out the Opening

We recommend that you fit the sink to the worktop before permanently fixing the worktop to the cabinet.

1. Place the sink upside down on the worktop. Position the sink on the worktop as required. Make sure the cabinet framework will clear all parts of the sink. Using a soft, sharp pencil draw around the sink as accurately as possible (Fig. 1.2). Remove the sink.
2. Draw the cut-out line as per your identified sink model using the suggested cut-out dimensions in **Table 1.1** equally spaced on the inside of the previous template drawn. (Fig. 1.3).
3. Drill as large a hole as possible inside the cutting line. Using a pad saw, jigsaw or similar, cut out the opening up to the cutting line.

### Sealing the Edges of the Opening.

We recommend that porous edges around the worktop are sealed using a waterproof sealant such as varnish, paint or wood glue. This will prevent swelling of the worktop should any small leaks occur (Fig. 1.4).



## Cut Out Dimension

Table 1.1

Range	Product Name	Code	Cut-Out Length (mm)	Cut-Out Width (mm)
Nova	Nova Compact Single Bowl	NOV8651__/_	840	480
	Nova Single Bowl	NOV1051__/_	980	480
	Nova 1.5 Bowl	NOV1052__/_	980	480

Fig. 1.5

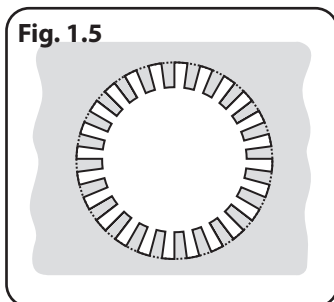


Fig. 1.6

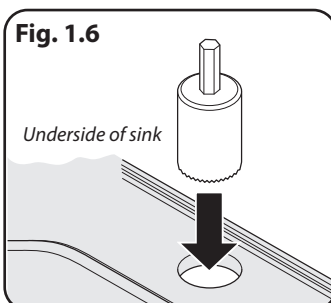
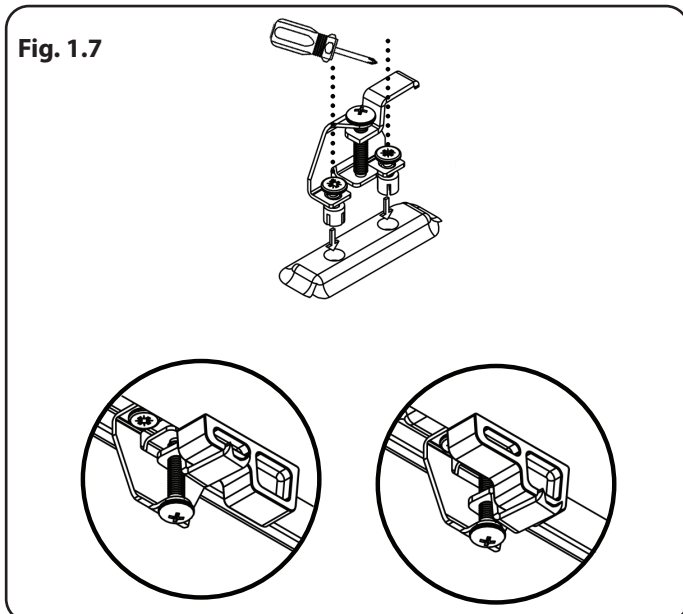


Fig. 1.7



## Preparing the Sink

- ⚠ **Before drilling please read safety instructions supplied with hole saw.**
- ⚠ **The front face must be fully supported to prevent cracking when drilling or cutting.**
- ⚠ **WARNING! Any machining operation will produce fine particles of dust. Drilling or cutting must be carried out in a well-ventilated area, we recommend using a face mask when drilling to prevent inhalation of dust particles.**

### Tap Hole Preparation

Tap hole locations are part cut into the underside of the sink. The upper section of the tap hole will have to be drilled out using a diamond cut 35mm drill bit (**Fig. 1.5**). The area around the tap hole will require some support. Always drill the tap hole from the underside of the sink using the semi-punched holes sized in accordance with the 35mm drill bit dimension (**Fig. 1.6**).

The tap hole will have rough edges. Use a suitable rasp to smooth the edges of the hole. Always work towards the sink surface avoiding upward strokes that may chip the sink surface, we recommend using a face mask when drilling to prevent inhalation of dust particles.

## Clip Preparation

### Screw down fixing

1. Locate the clamps then give a gentle tap to secure in the slot (**Fig. 1.7**).
2. Screw the camps into position.

## Waste Fittings

Fit the waste fittings to the sink using the instructions supplied with them.

## Applying the Silicon Sealant

- ⚠ **DO NOT use Epoxi sealant or Epoxi adhesive.**

### Top Mounted Sinks

Apply silicon sealant (not supplied) to the underside of the sink rim.

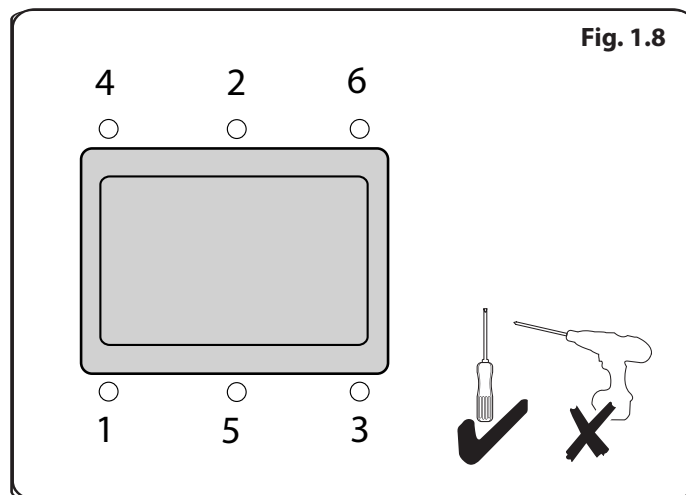
## Fitting the Sink

### Top Mounted Sinks

1. Turn the sink upside down and lay the worktop over the sink. Swing each clip into place – this is the most effective method, although if the worktop has been fitted to the cabinet the sink can be placed in the opening and fixed in position from underneath.
2. Centre the sink. Tighten the fixing screws in the sequence shown in **Fig. 1.8**.

**⚠ DO NOT tighten fully at first attempt.**

Remove any surplus sealing material or wipe away any excess sealant.



## After Care

### Day-to-day care

Although your sink is made from extremely durable materials and will withstand a great deal of hard use, it can be scratched by hard or sharp objects. If the surfaces are to be kept in a blemish free condition reasonable care should be taken when handling such items.

**DO NOT** use the drainer as a chopping board.

### Cleaning

**DO NOT** use abrasive cleaning creams or powders, concentrated caustic soda, formic acid or anything highly corrosive.

**DO NOT** attempt to remove limescale by scraping it off.

Please refer to [www.rangemaster.co.uk](http://www.rangemaster.co.uk) for a full guide to cleaning your sink.

### 25 YEAR GUARANTEE

We guarantee to replace any igneous granite sink that breaks due to material or manufacturing defects within 25 years from the date of purchase.

The guarantee does not cover normal wear and tear occurring through use of the product.

For the guarantee to apply the owner must follow the use, care and cleaning instructions provided.

Accessories and waste fittings are not included in this guarantee.



Meadow Lane, Long Eaton,

Nottingham, NG10 2GD, England

Trade Enquiries: +44 (0)115 946 4000

Consumer Enquiries: +44 (0)1926 457628

E-mail: [consumers@agarangemaster.co.uk](mailto:consumers@agarangemaster.co.uk)

[www.rangemaster.co.uk](http://www.rangemaster.co.uk)

25

EN 13310 : 2015

Kitchen sink made of: Granite / Composite

Cleanability: Pass

Load resistance: NPD / N/A

Durability: Pass